



Activities of K-BON with Civil Scientist

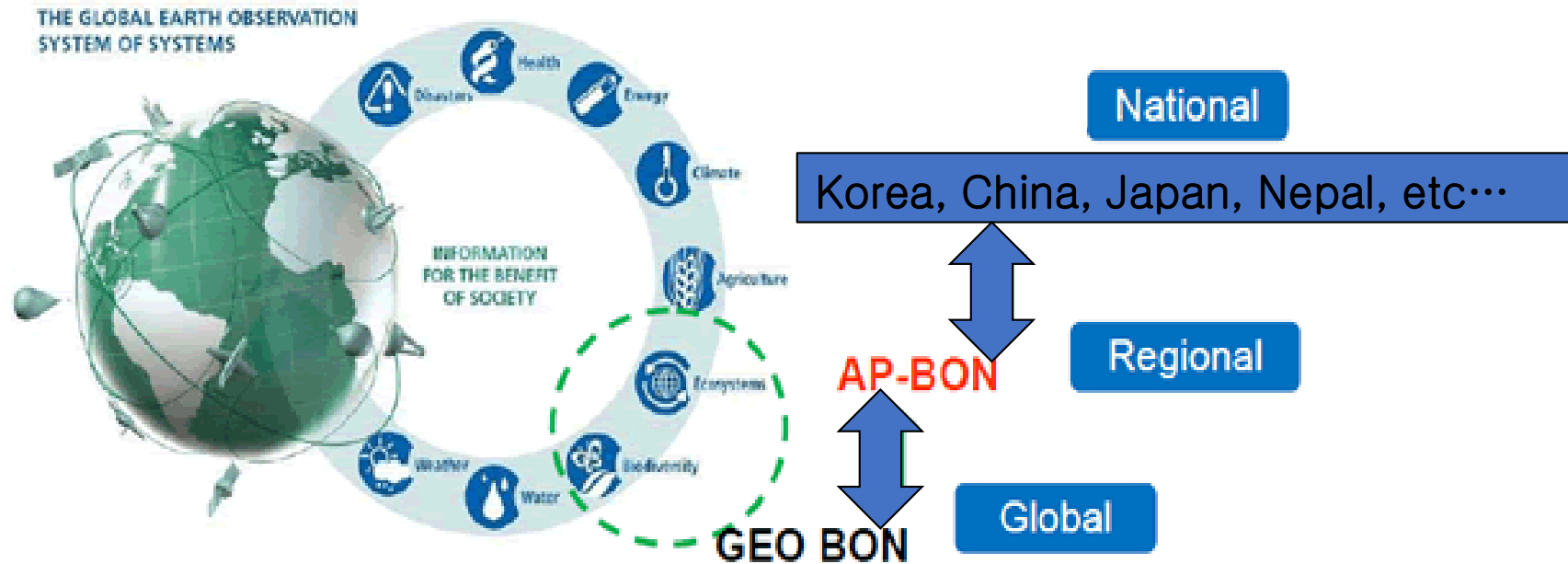
22 Jan, 2021

NIBR, KOREA

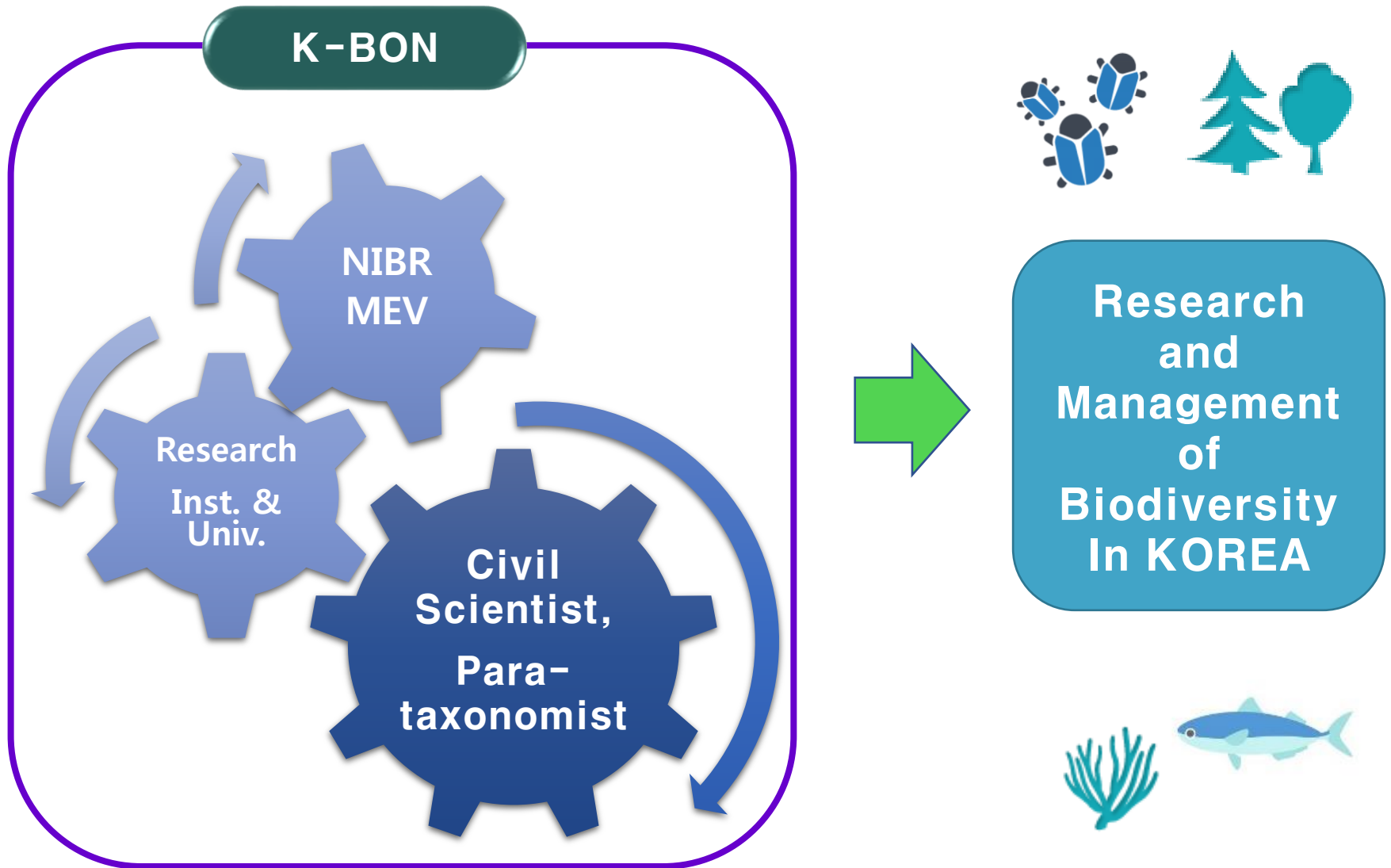


K-BON is

- National BON of Asia Pacific Region
- Member of AP-BON
- Collaborate to GTI(Global Taxonomy Initiative) and ESABII



K-BON : Korea Biodiversity Observation Network



Working Group of K-BON



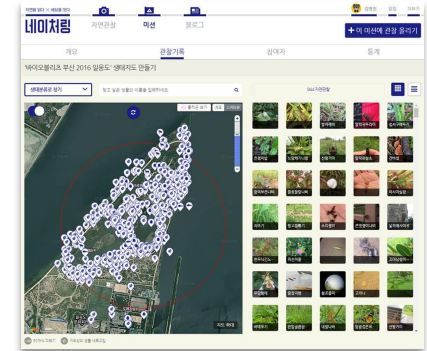
WG 3

Capacity Building as like organize BioBlitz, Field survey education program, etc.



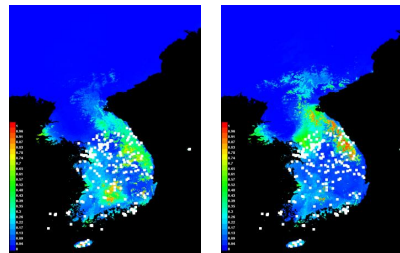
WG 1

Monitoring group with Civil Scientists & NATURING

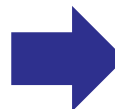
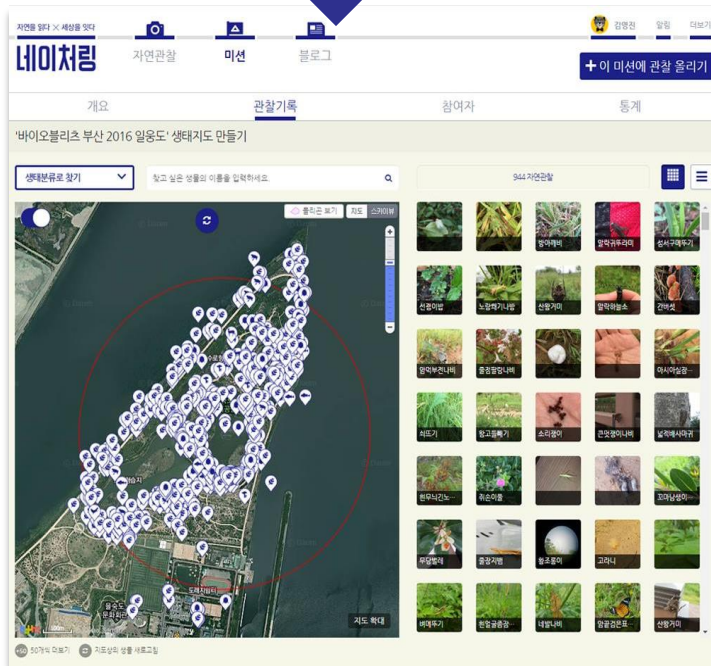
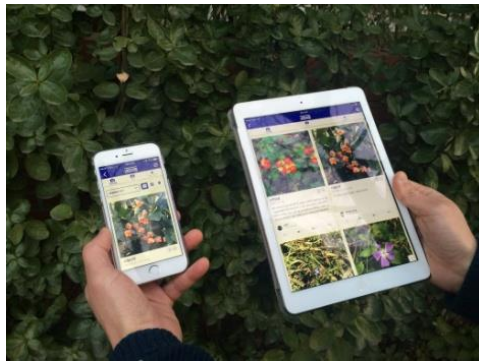


WG 2

Research of prediction and adaptation of biodiversity from Climate Change

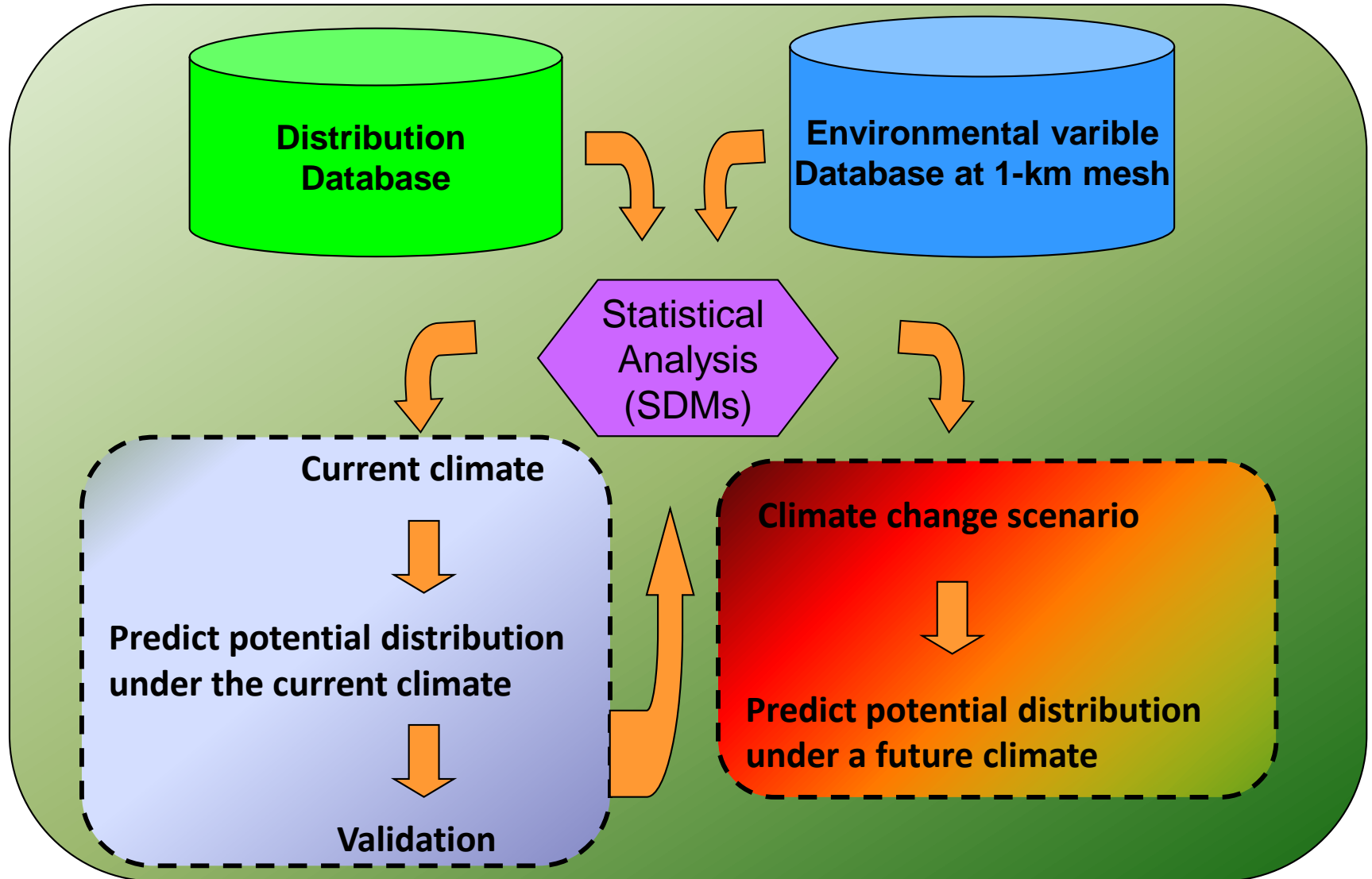


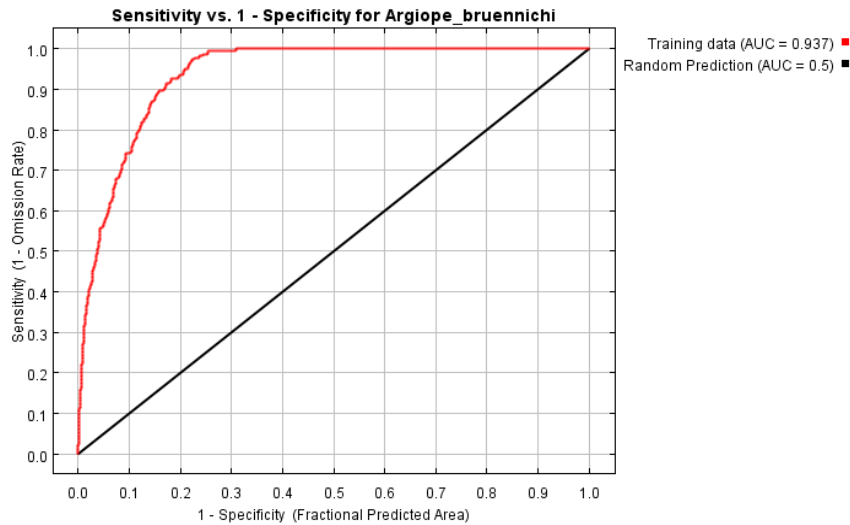
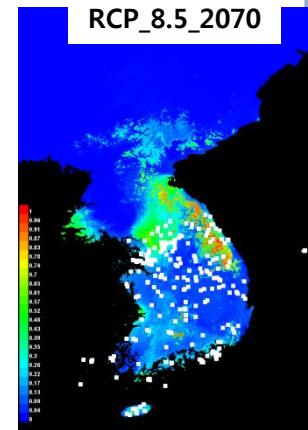
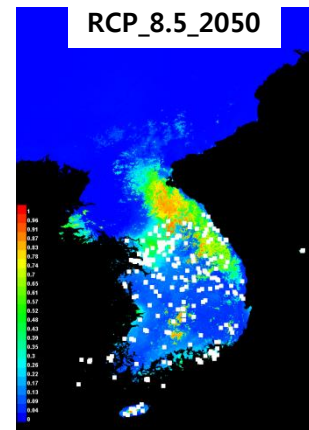
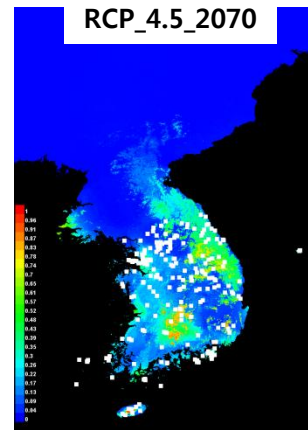
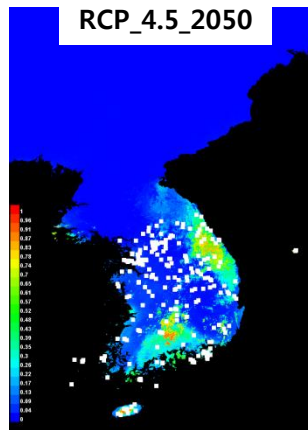
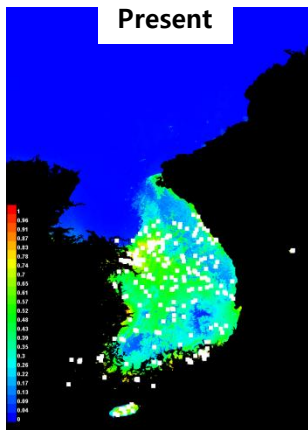
WG1 : Monitoring with mobile device and SNS



WG2 : SDM analysis and Research from K-BON data with specimens

Distribution data



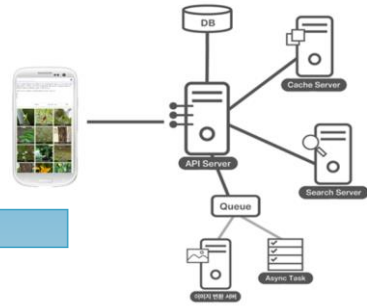


Banana spider
Argiope bruennichi Scopoli 1772

	Pre	RCP_4.5_2050	RCP_4.5_2070
Area (km ²)	124,071	40,892	63,726
		RCP_8.5_2050	RCP_8.5_2070
		63,838	61,075

WG2 : Geospatial analysis services linking propulsion by utilizing the K-BON data

Species information



Distribution information

생물종 분포

홈 > 생물종 분포 > 생물종

기후변화적응종 검색

생물종명 검색

분류군 전체 포유류 어류 양서류 파충류 조류 무척추동물 곤충 관속식물 선충류
 규조류 편모조류 담수녹조류 균조류 해조류 균류 지의류 왕생생물 세균 남조류

정엽선서 국명 가나다순 획명 ABC순

기후변화적응종 전체 목록



검색결과

분포지도 보기 > 전체 종목록 >

국명 : 산고리물

학명 : *Pseudolysimachion rotundum* (Nakai) Holub var. *subintegrum* (Nakai) T. Yamaz.

분류군 : 관속식물

표본 1건

분포지도 > 자원정보 >

국명 : 산고리물

학명 : *Pseudolysimachion rotundum* (Nakai) Holub var. *subintegrum* (Nakai) T. Yamaz.

분류군 : 관속식물

표본 1건

분포지도 > 자원정보 >

생물종 분포

홈 > 생물종 분포 > 기후변화 적응 생물종

연구사업 소개 | 기후변화적응종이란? | 기후변화적응종 목록 | 기후변화적응종 분포

0목 0과 0속 70종 총 700점

생물종 >

분류군 선택 > 검색 >

중국어명(학명)	데이터
<input type="checkbox"/> 주걱계말초 <i>Erigeron strigosus</i> Muhl. ex Willd.	3
<input type="checkbox"/> 주걱계말초 <i>Erigeron strigosus</i> Muhl. ex Willd.	6
<input type="checkbox"/> 주걱계말초 <i>Erigeron strigosus</i> Muhl. ex Willd.	5
<input type="checkbox"/> 주걱계말초 <i>Erigeron strigosus</i> Muhl. ex Willd.	5
<input type="checkbox"/> 주걱계말초 <i>Erigeron strigosus</i> Muhl. ex Willd.	1
<input type="checkbox"/> 주걱계말초 <i>Erigeron strigosus</i> Muhl. ex Willd.	1
<input type="checkbox"/> 주걱계말초 <i>Erigeron strigosus</i> Muhl. ex Willd.	1
<input type="checkbox"/> 주걱계말초 <i>Erigeron strigosus</i> Muhl. ex Willd.	1
<input type="checkbox"/> 주걱계말초 <i>Erigeron strigosus</i> Muhl. ex Willd.	1
<input type="checkbox"/> 주걱계말초 <i>Erigeron strigosus</i> Muhl. ex Willd.	1
<input type="checkbox"/> 주걱계말초 <i>Erigeron strigosus</i> Muhl. ex Willd.	1
<input type="checkbox"/> 주걱계말초 <i>Erigeron strigosus</i> Muhl. ex Willd.	1

1960 2010 2015

1980년 1월 ~ 2010년 12월

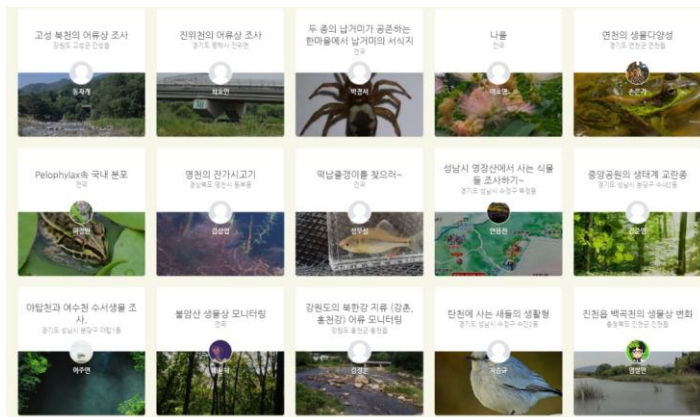
1500m, 500m, 1500m, 500m

10 km

분포데이터 엑셀 다운로드 > 분포지도 이미지 다운로드 >

WG3 : Capacity Building

- Organize to BioBlitz and K-BON Junior Program
- Monitoring with field education and training of future scientist



Future Plan

Main Focus in 2021 ~

Strengthen the role of supporting alien species management policie



Enhanced Monitoring

- Expansion of target species
- Diversification of methods



Strengthening cooperation

- Strengthening cooperation between regions and institutions



Data Management

- Verification of materials and enhancement of analysis function

Thank You



KBON

Korea Biodiversity Observation Network