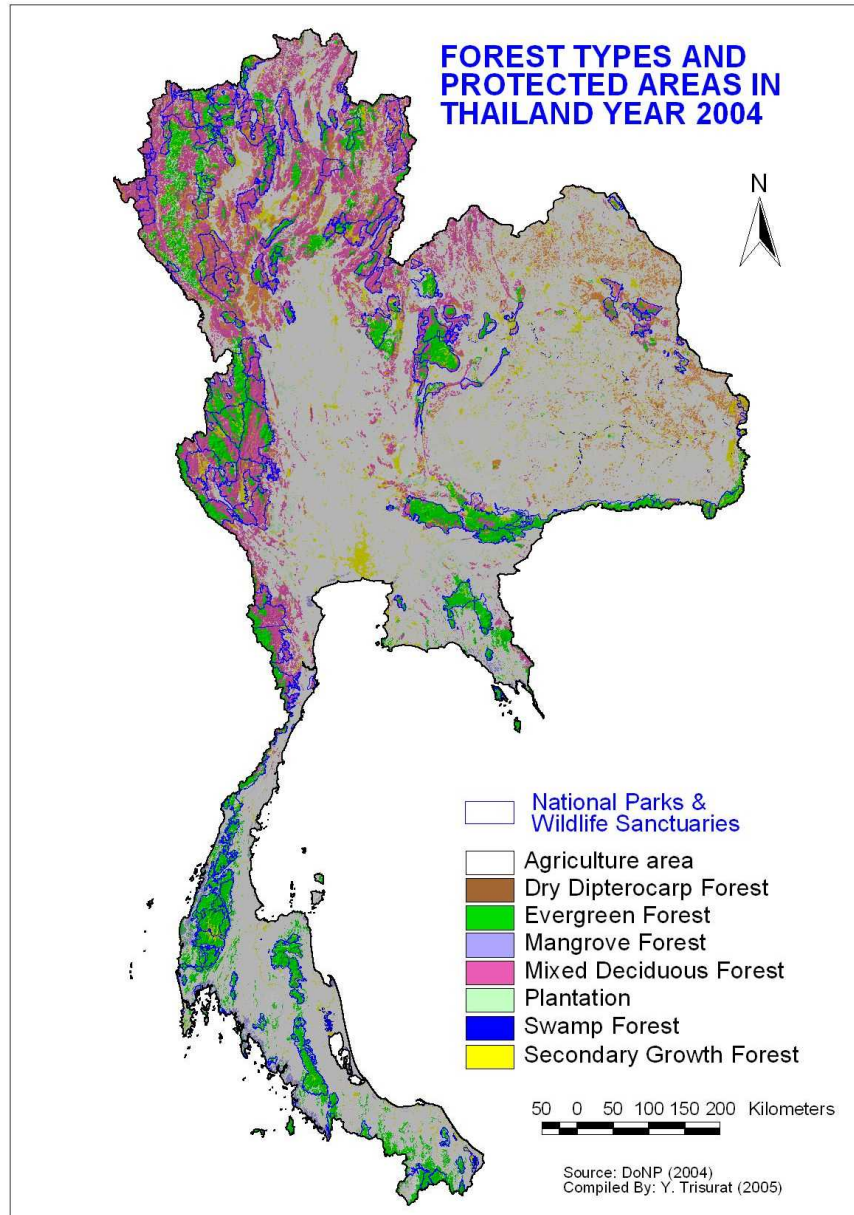


# Thailand-BONs



## Ground Observations

Long-term Ecological Research Permanent Plots  
(Terrestrial Ecosystems)

Nationwide Forest Inventory Plots

Nationwide Freshwater and Coastal Wetlands  
Inventory

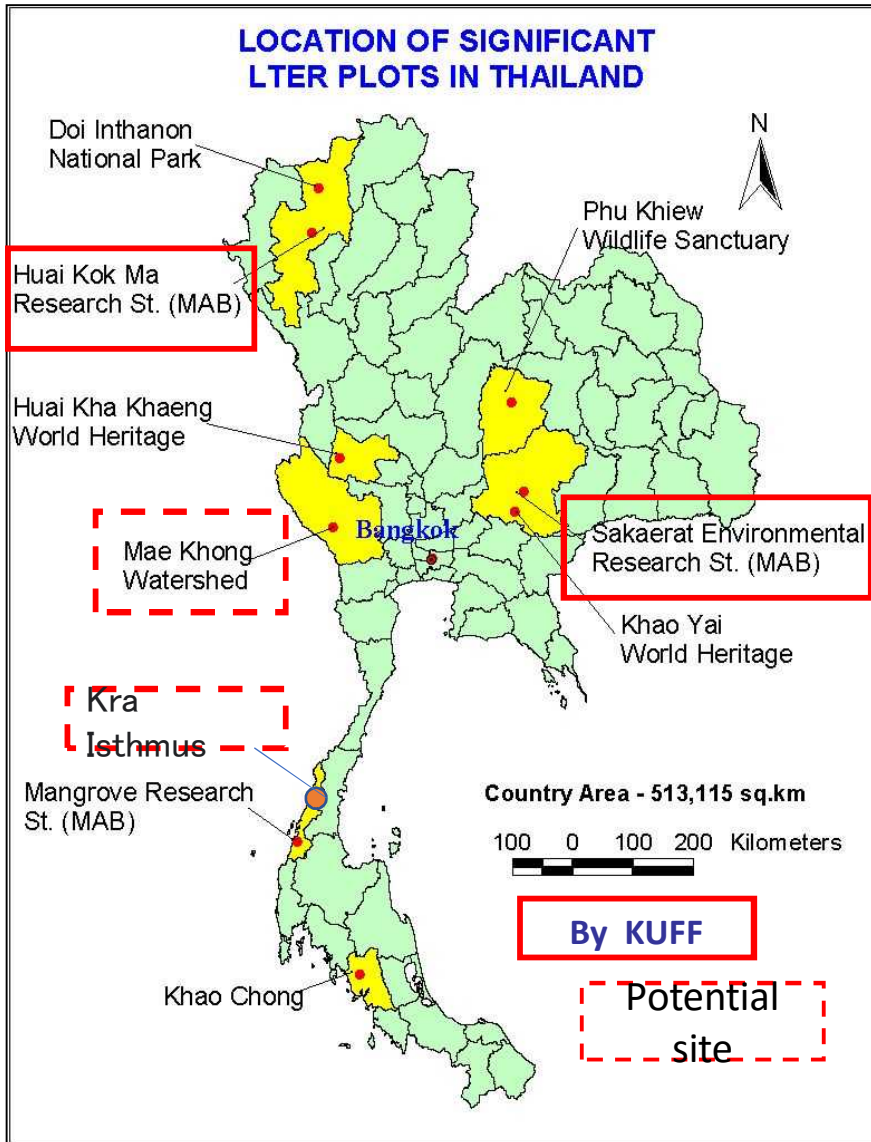
**Research Network (associated with ILTER)**

Thai Forest Ecological Research Network

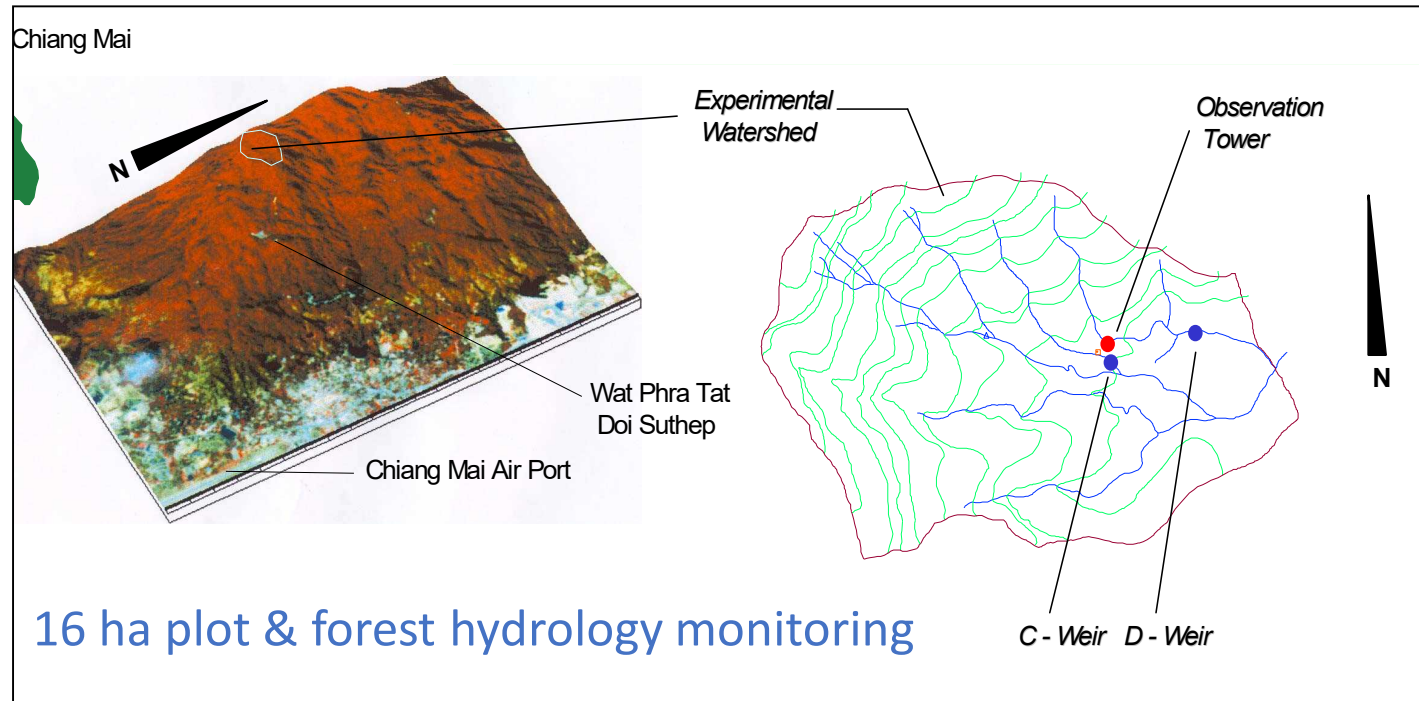
# Thailand-ILTER



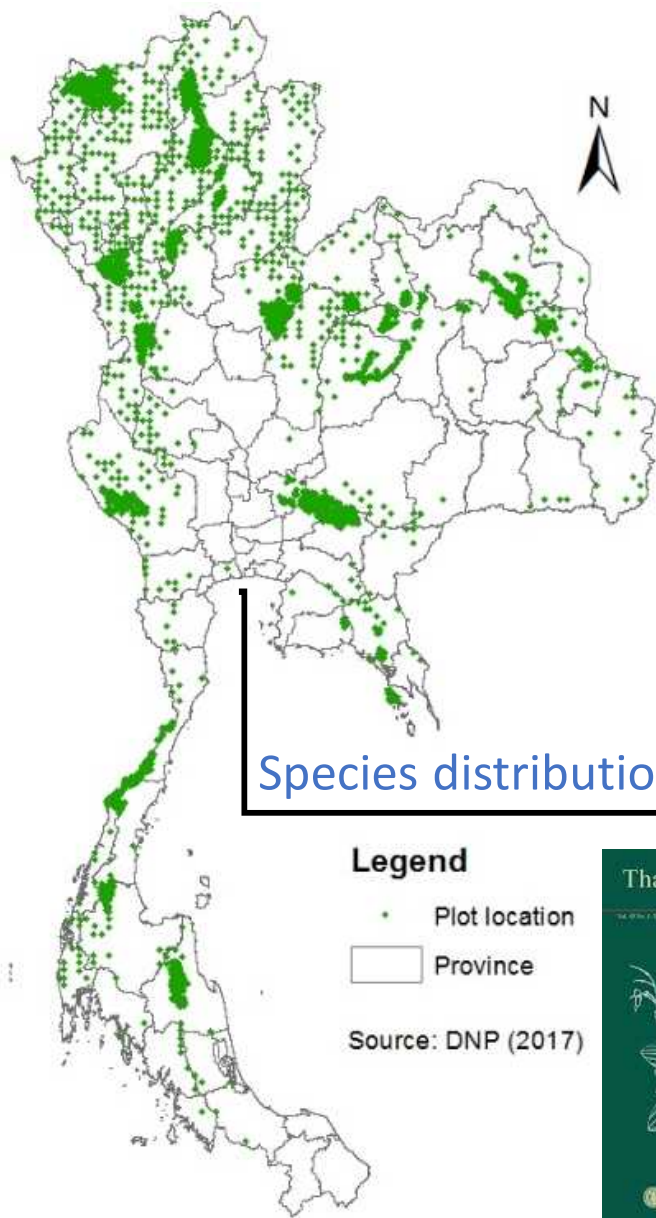
## Kok Ma MAB



Host 13<sup>th</sup> ILTER-EAP Con. in Sep 2021



# Systematic Forest Inventory

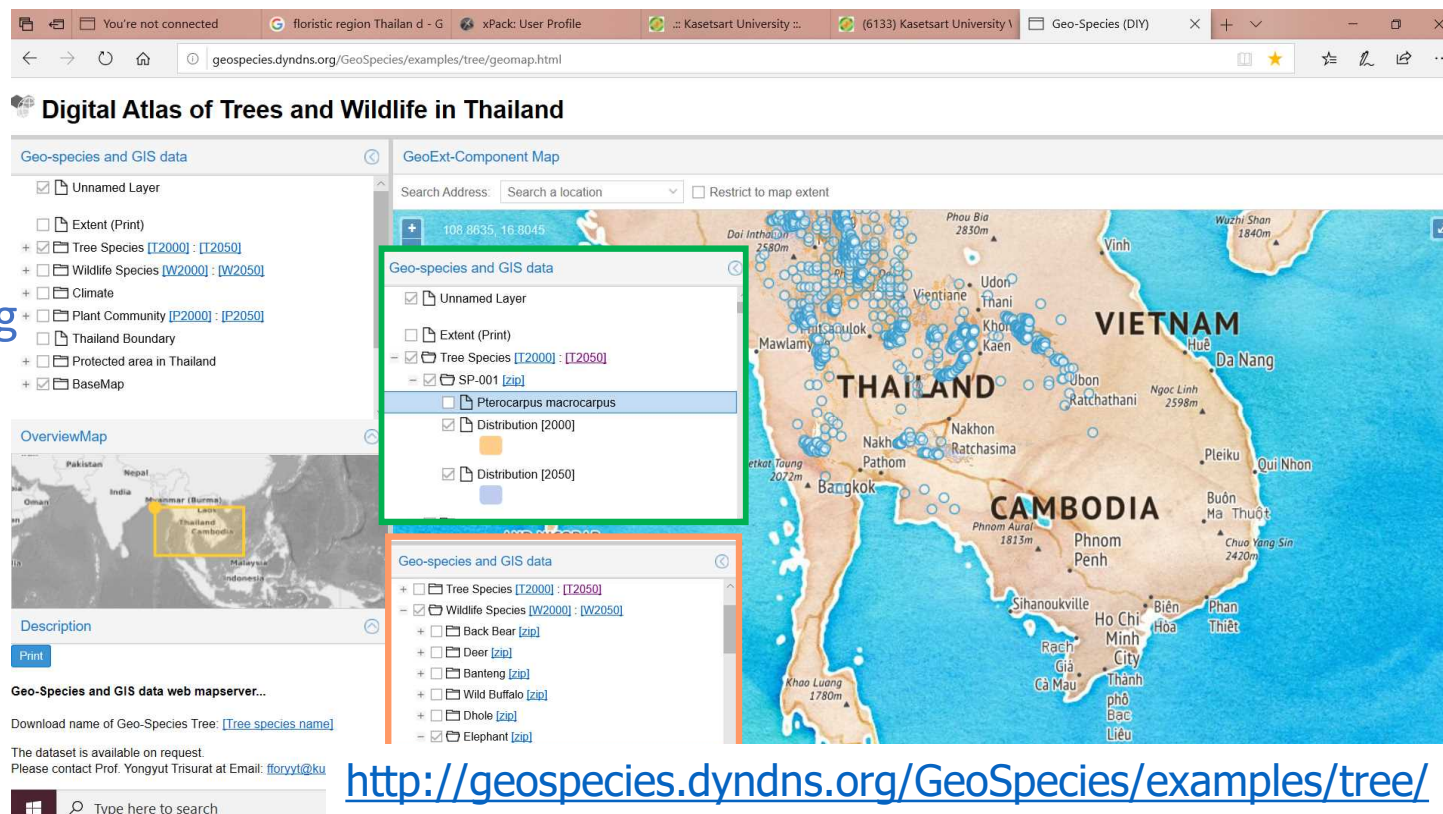


Species distribution modeling

- Legend**
- Plot location
  - Province
- Source: DNP (2017)



Spacing	Year	Number of plots	Extent	Responsible agency	Remarks
1.5 km × 1.5 km	2001–2003	903	Country	RFD/ITTO	Designed and pilot project
20 km × 20 km	2004–2007	1,285	Country	RFD/ITTO	Entire country but 158 plots un-established
10 km × 10 km	2004–2005	10,372	Country	RFD/DNP	Only inside remaining forest cover
5 km × 5 km	2006–2010	14,152	Protected area	DNP	Using a 0.1 ha plot center
10 km × 10 km	2011	859	Country	DNP	Using a 0.1 ha plot center
2.5 km × 2.5 km <sup>a</sup>	2012–present	4,500	Protected area	DNP	Using a 0.1 ha plot center



**Digital Atlas of Trees and Wildlife in Thailand**

Geo-species and GIS data

- Unnamed Layer
- Extent (Print)
- Tree Species [T2000] : [T2050]
- Wildlife Species [W2000] : [W2050]
- Climate
- Plant Community [P2000] : [P2050]
- Thailand Boundary
- Protected area in Thailand
- BaseMap

OverviewMap

Description

Print

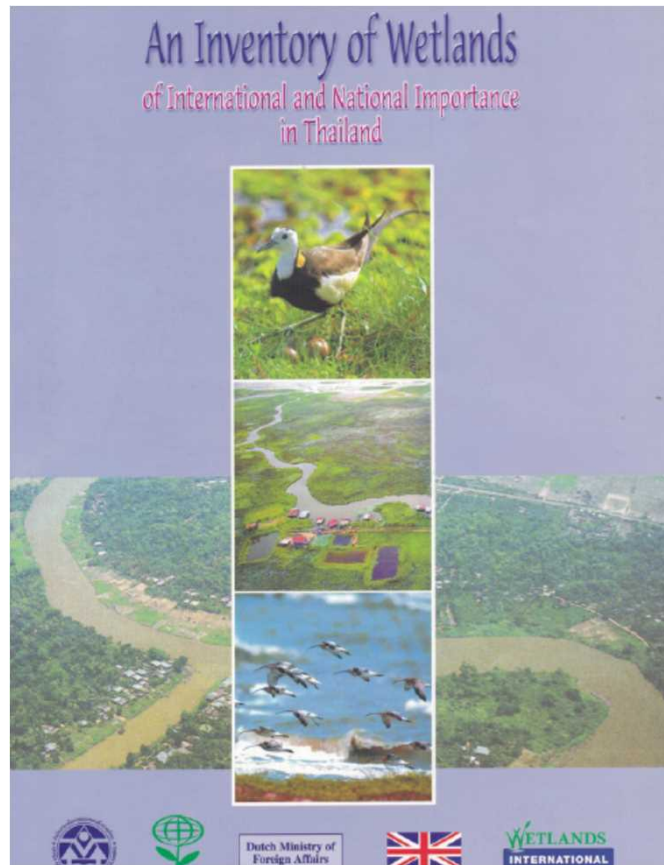
Geo-Species and GIS data web mapsver...

Download name of Geo-Species Tree: [Tree species name]

The dataset is available on request.  
Please contact Prof. Yongyut Trisurat at Email: [floryut@ku](mailto:floryut@ku)

<http://geospecies.dyndns.org/GeoSpecies/examples/tree/>

# Nationwide Freshwater and Coastal Wetlands Inventory



- Register: 14 Ramsar sites, other international and national importance & local sites
- Regular assessment on biological features and management effectiveness of Ramsar sites



## Thai Forest Ecological Research Network

