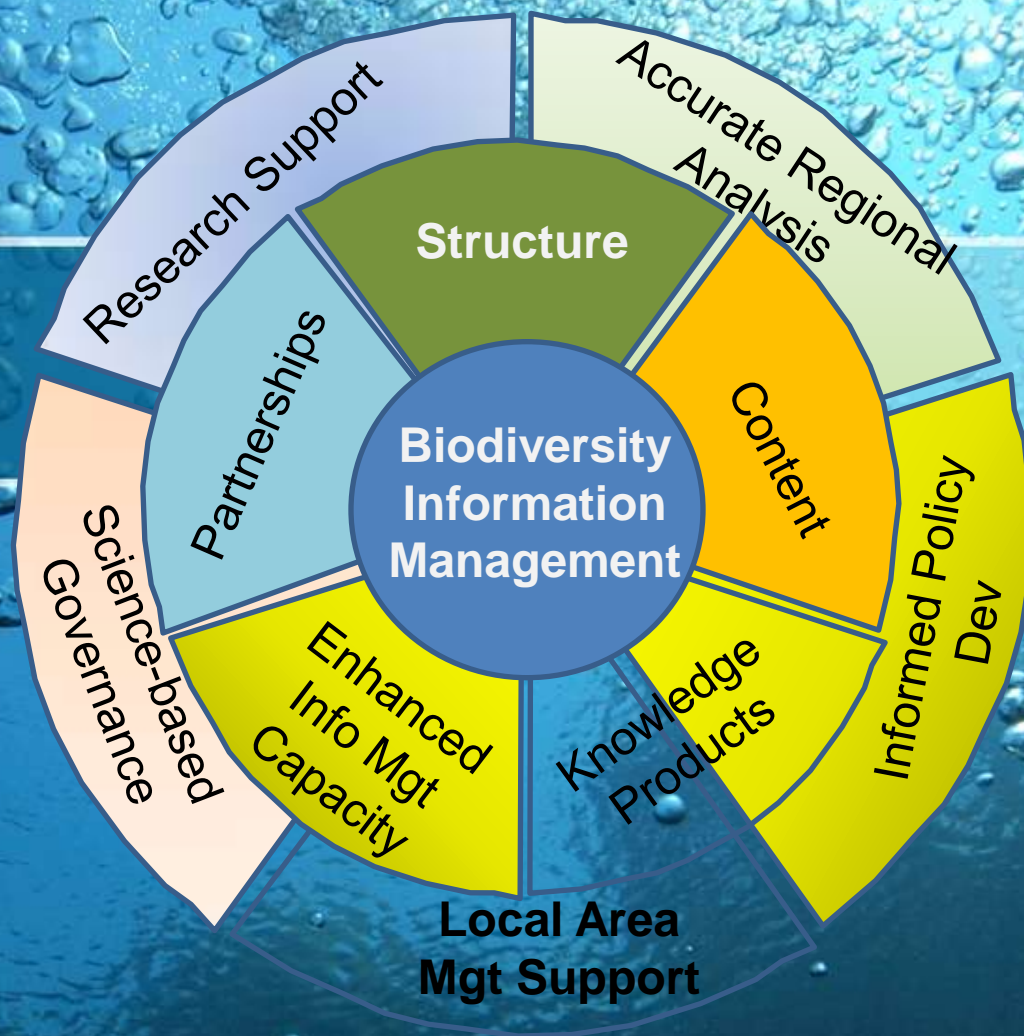


FUTURE PROSPECTS

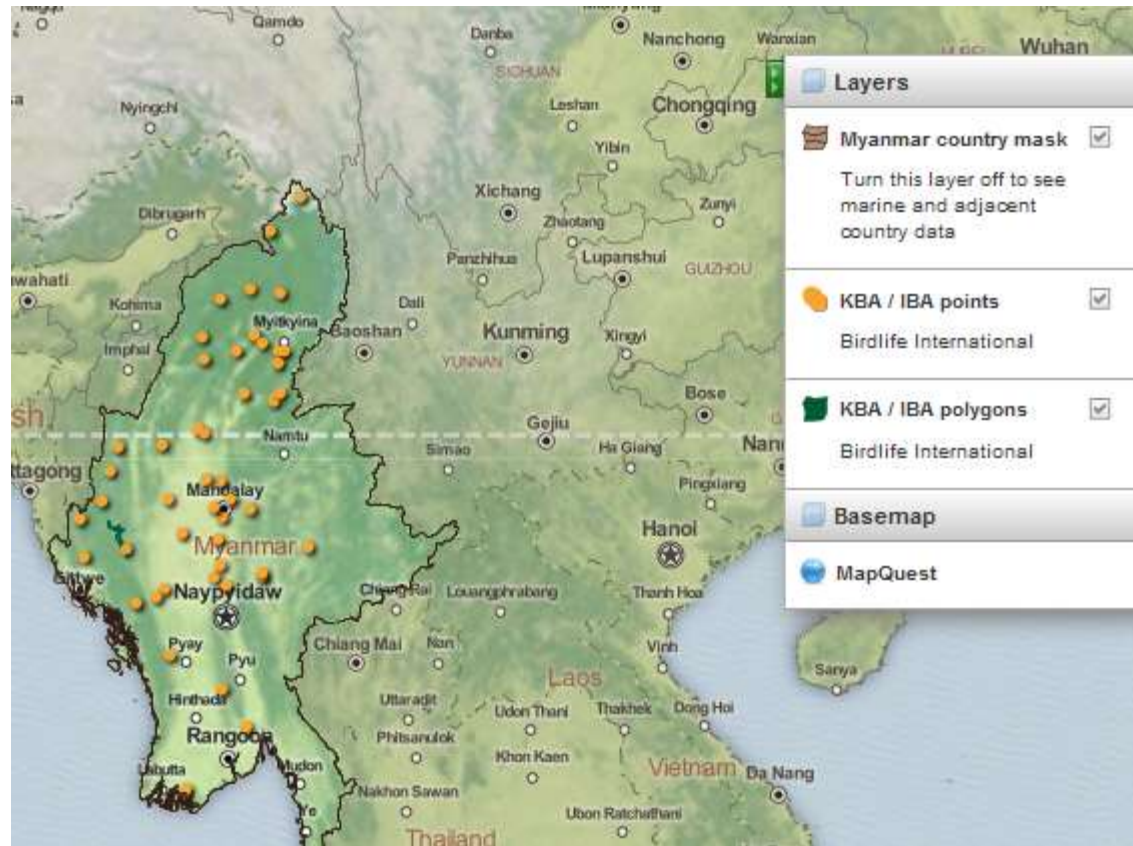
The ASEAN
Clearing House
Mechanism

Biodiversity Information Management at ACB strives to establish appropriate information repositories to enable delivery of science - based references for developing knowledge products, support decision making, policy development and deliver on its main support functions.

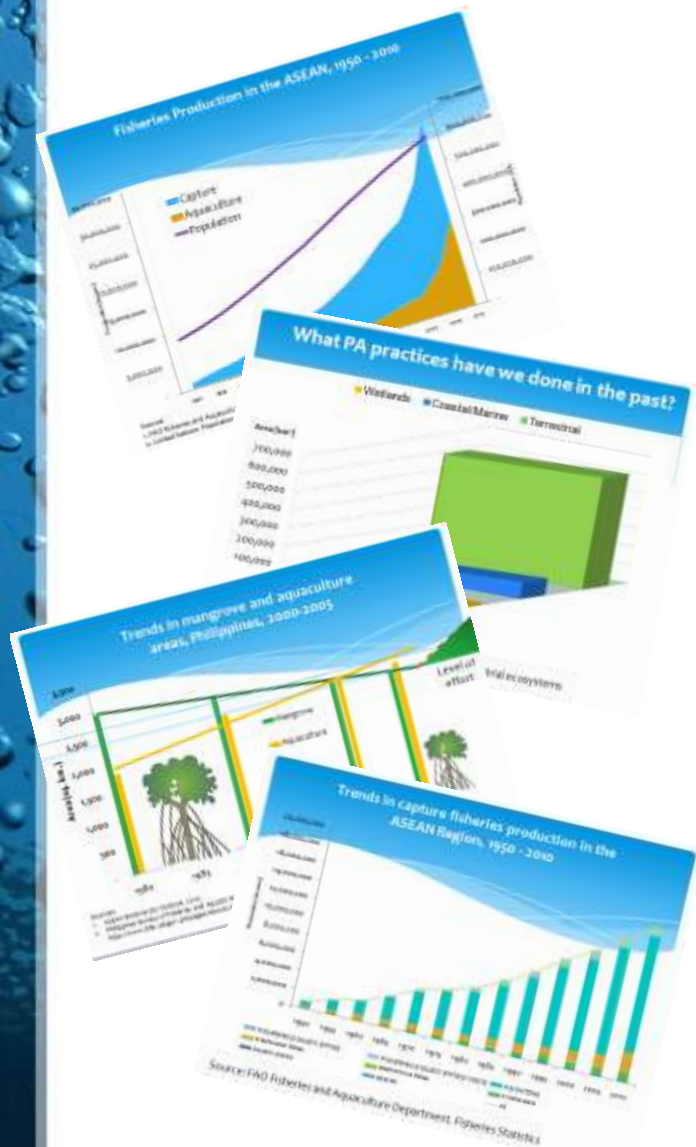


Status

- **Interoperability achieved**
 - **Species**
 - **Protected Areas**
 - **E-Library**
- **Over 20 thousand species**
- **8 National CHMs, 2 more to go**
- **Map-based Critical Habitats Identified for the region**



Future Priorities




- ABO_2
- 5th NR Report Generator
- Aichi Targets 5,6,7,8,9,10,11,12,14 implementation progress indicators
- User defined analysis
- Invasive species database

Invasive Species in the ASEAN Region

Species name	Common name/s	Geographical range		Pathways of Introduction
		Native range	Known introduced range in the ASEAN	
<i>Poecilia reticulata</i>	guppy; rainbow fish	<ul style="list-style-type: none"> • Brazil • Guyana • Venezuela • Caribbean Islands 	<ul style="list-style-type: none"> • Indonesia • Lao PDR • Malaysia • Myanmar • Philippines • Singapore • Thailand • Viet Nam 	<ul style="list-style-type: none"> • Biological control • Pet/aquarium trade

Invasive Species from the ASEAN Region

Species name	Common name/s	Geographical range		Pathways of Introduction
		Native range in the ASEAN	Known introduced range	
<p>Pterois volitans</p> 	<p>firefish; lionfish; lionfish scorpion; scorpion fish; zebrafish</p>	<ul style="list-style-type: none"> • Indonesia • Malaysia • Philippines • Viet Nam 	<p>United States, Bermuda, and the Bahamas</p>	<ul style="list-style-type: none"> • Natural dispersal • Pet/aquarium trade • Ship ballast water



Information Management Advocacy

- **Use interoperable species data (standard terms, format and metrics) associated with biological collections**
- **Store collections of any kind of biological objects or data appropriately and curate your data at source**
- **Facilitate analysis, integration and comparison of species data at all administrative levels and across locations.**
- **Share data and findings of analysis, to target stakeholders**

The background of the slide is a close-up, high-angle shot of water with numerous bubbles of various sizes. The water is a deep blue color, and the bubbles are bright, creating a textured, shimmering effect. The bubbles are more densely packed in the upper right and lower right areas, with some larger bubbles in the center and left.

THANK YOU

**The ASEAN
Clearing House
Mechanism**